

M- HC6 (500)



M- HC6

miniBOOSTER HC6

$P_{in} = 20 - 300$
()

$P_H = 500$
()

$Q = 100$ /

: 23

/). (:), (- - (),

-
-
-
-
-

M- HC6

M- HC6-001

1 1 (3/8" BSPP)

M- HC6-002

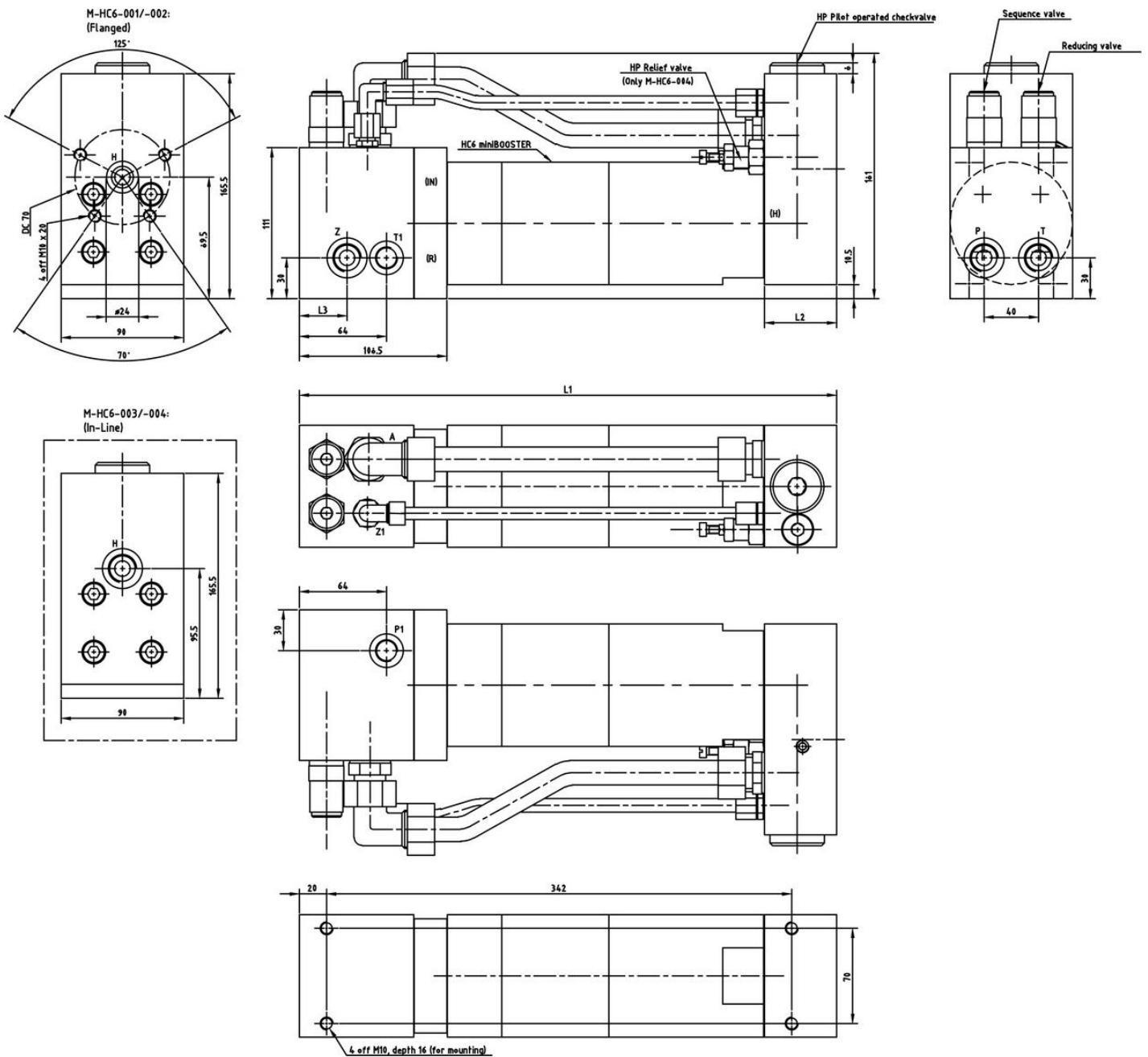
1 1 (1/2" BSPP)

M- HC6-003

1/2" BSPP

M- HC6-004

1/2" BSPP



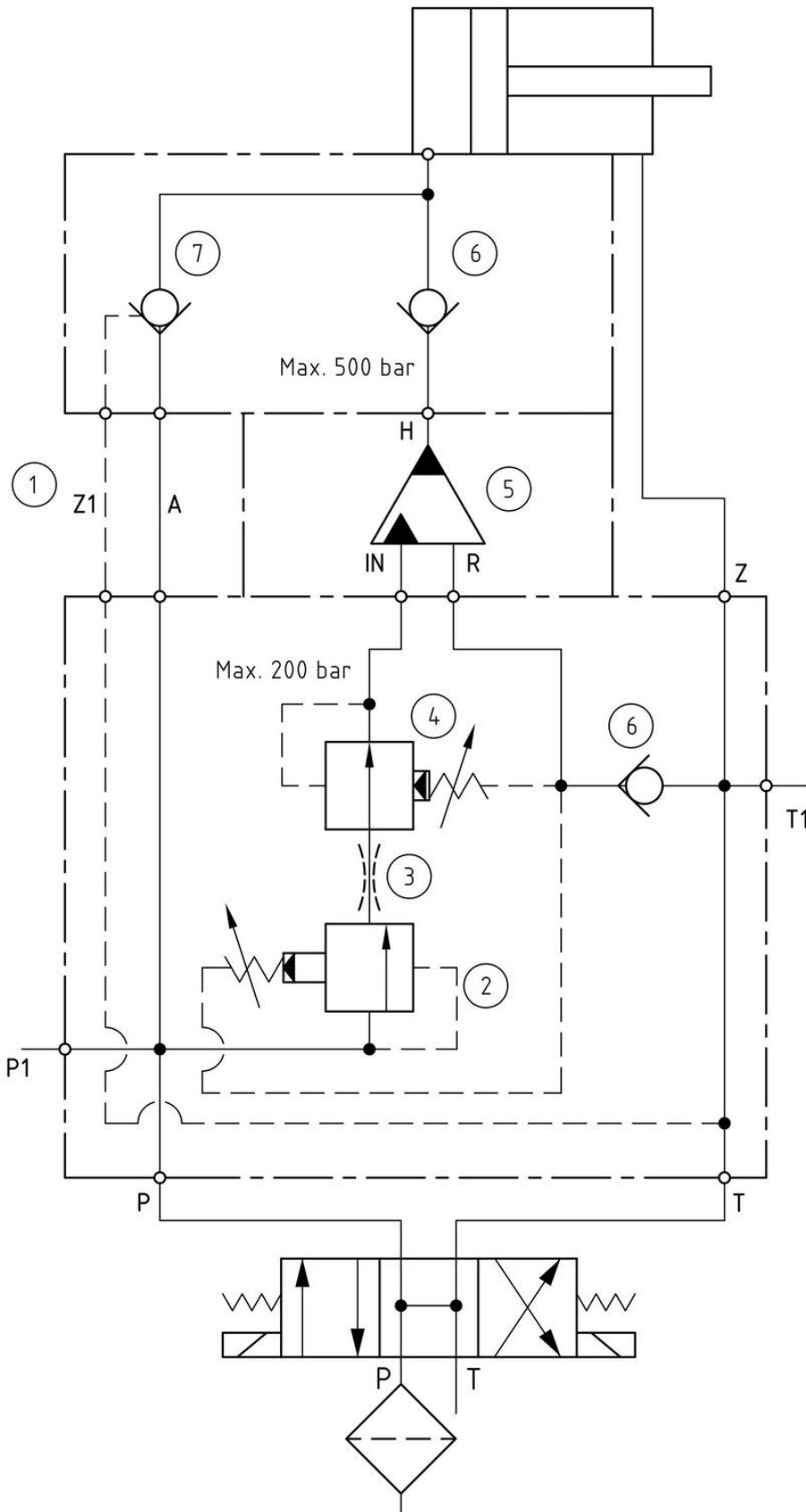
6-126

 PDF- Datei herunterladen: **6-122-05. Montagezeichnung. M- HC6-001**

 PDF- Datei herunterladen: **6-123-01. Montagezeichnung. M- HC6-002**

 PDF- Datei herunterladen: **6-124-01. Montagezeichnung. M- HC6-003**

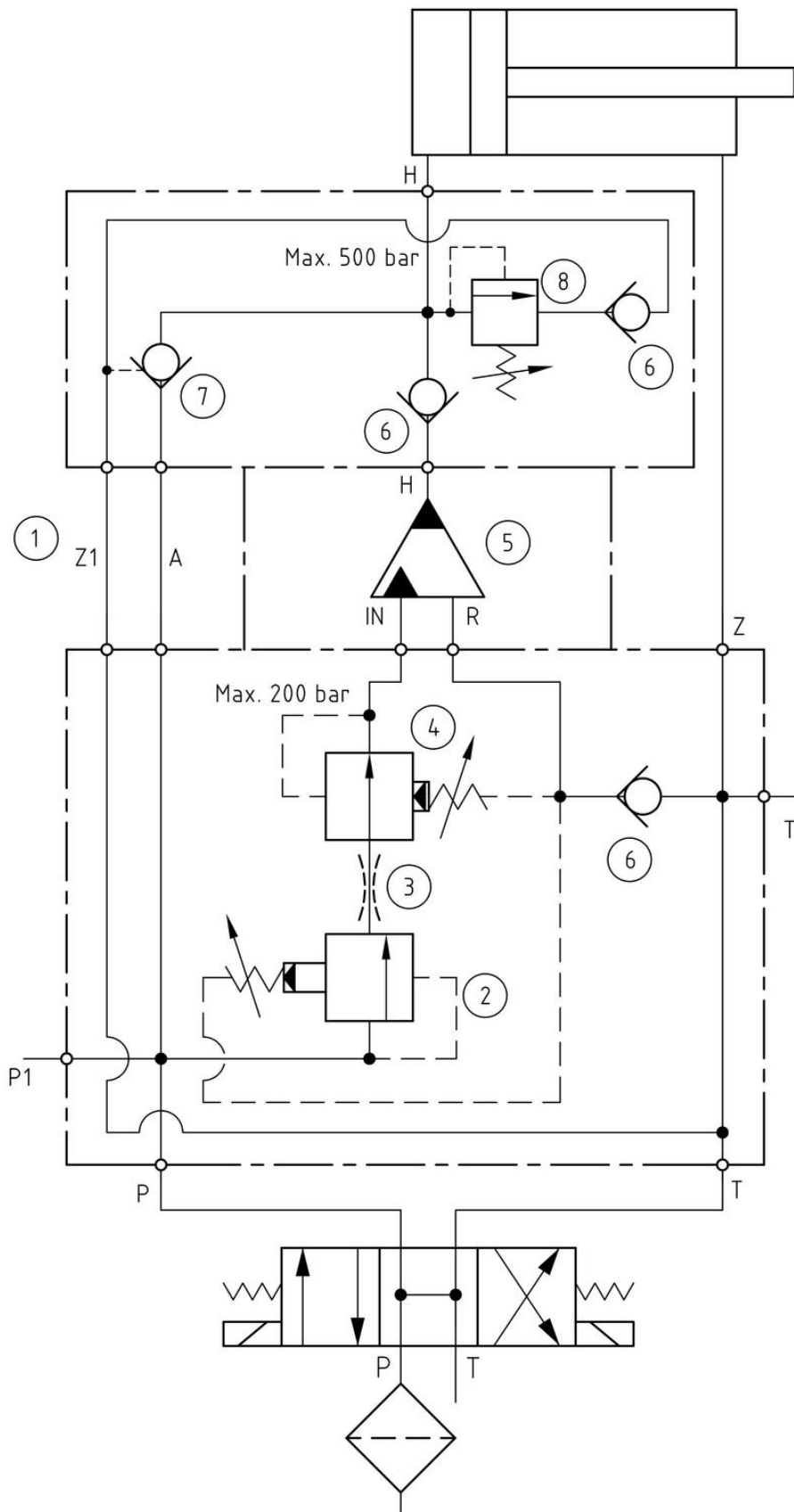
 PDF- Datei herunterladen: **6-125-02. Montagezeichnung. M- HC6-004**



- 1: By-pass system
M-HC6-001 /-002 /-003
- 2: Sequence valve
CP240-21B0AD0
Cavity: C10-3
Set: 90% of system pressure
- 3: (Option)
Blind \varnothing ___; ___L/min.
- 4: Pressure reducing valve
CP230-4B0AC0 (Range:28-207 bar)
Cavity: C10-3
Set: Max. 200 bar
- 5: HC___-A-__
- 6: Check valve (High pressure)
RK 2
- 7: Pilot operated check valve
(High pressure)
RHC 4V

 Download PDF file: **0-262-05. Function diagram. M- HC6-00**

M- HC6-004



- 1: By-pass system
M-HC6-004 (✓) ✓
- 2: Sequence valve
CP240-21B0AD0
Cavity: C10-3
Set: 90% of system pressure
- 3: (Option)
Blind \varnothing ___; ___ L/min.
- 4: Pressure reducing valve
CP230-4B0AC0 (Range:28-207 bar)
Cavity: C10-3
Set: Max. ___ bar
- 5: HC ___ - ___ - A - ___
- 6: Check valve (High pressure)
RK 2
- 7: Pilot operated check valve
(High pressure)
RHC 4V
- 8: Pressure Relief Valve
CMV 1B-500 (Range: 0-500 bar)
Set: Max. ___ bar

Download PDF file: **0-289-02. Function diagram. M- HC6-004**

miniBOOSTER M- HC6

[Translate to Russian:]

Model	Connections H	Options	Intensification
M- HC6-001	Flange	P1, T1 3/8" BSPP	1.9/2.5/3.3/4.0
M- HC6-002	Flange	P1, T1 1/2" BSPP	1.9/2.5/3.3/4.0
M- HC6-003	Tube 1/2" BSPP		1.9/2.5/3.3/4.0
M- HC6-004	Tube 1/2" BSPP	Relief valve on HP side	1.9/2.5/3.3/4.0

miniBOOSTER M- HC6

M- HC6, 500 100 / 1/2" BSPP
HC6-2.5- A-1:

M- HC6-003 – 2,5 – A – 1